



SOPWELL
HOUSE

SPACE TO BE

MEETINGS & EVENTS



SOPWELL
HOUSE

CONTENTS

| | |
|-------------------------------------|----|
| WELCOME | 3 |
| FLOOR PLANS | 6 |
| ST ALBAN SUITE | 10 |
| LORD MOUNTBATTEN TO PRINCE LOUIS | 12 |
| FIRST FLOOR | 14 |
| YOUR COUNTRY HOME FROM HOME | 17 |
| TEAM BUILDING | 18 |
| RELAX & REJUVENATE | 19 |
| FABULOUS HOMEMADE FOOD | 22 |
| LOCATION | 23 |

A WARM WELCOME TO YOUR PERFECTLY PLACED COUNTRY HOTEL

Nestled within 12 acres of idyllic Hertfordshire countryside, with easy access via rail, road and air, Sopwell House is perfectly placed to host a conference, meeting or event of any size.

Sopwell House prides itself on its customer focused approach, and as a family-run business it is our ethos to treat every meeting, event, wedding and private celebration like a family gathering.

Our experienced team possess a passion to deliver warm and faultless service to every guest, with attention to detail and genuine hospitality at the heart of everything we do.

From the booking process through to the day of your event you will have a dedicated event co-ordinator who will oversee all the finer details to ensure that your event runs smoothly from start to finish.

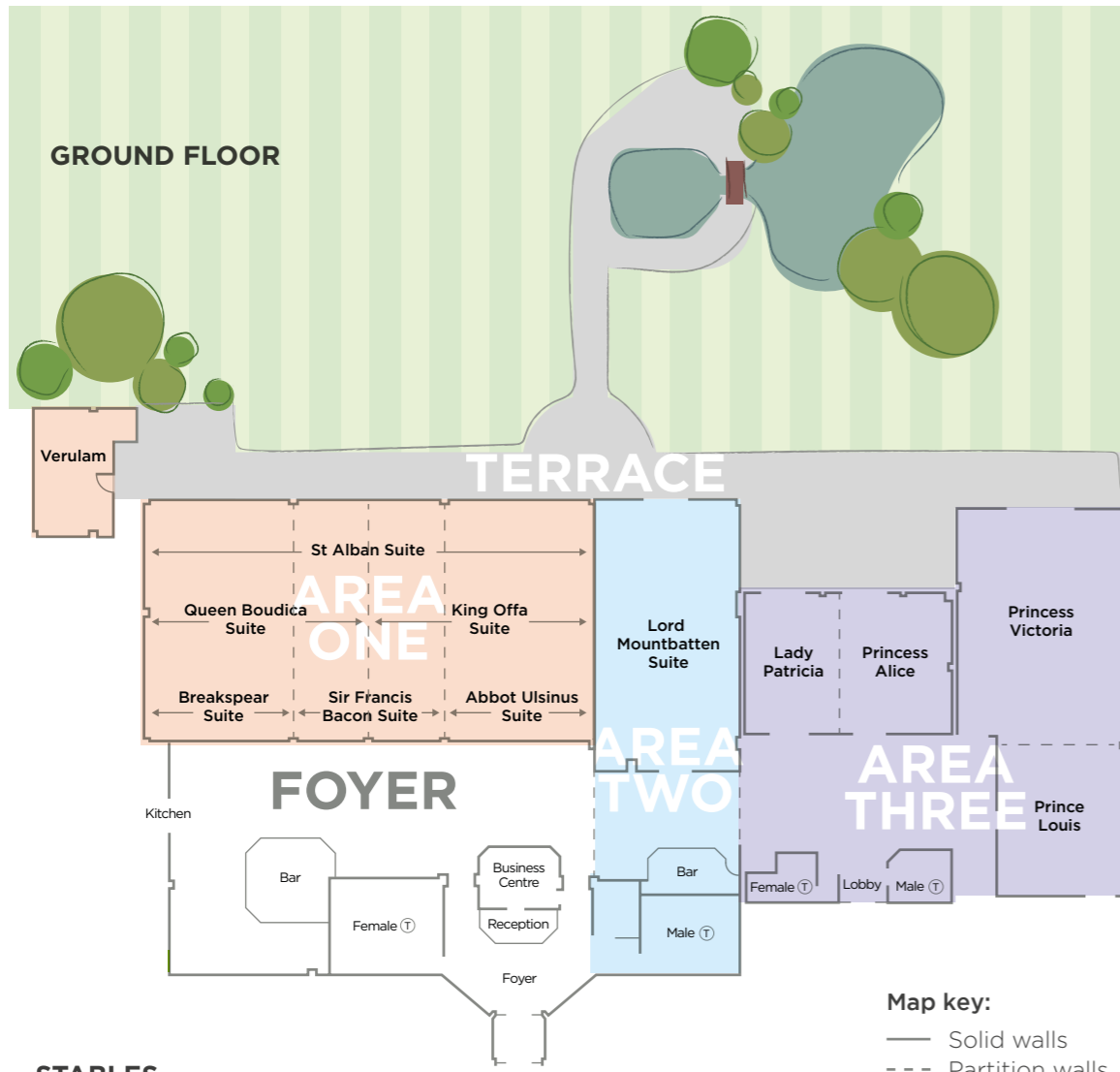
Whether you are looking to host a large conference or small meeting, a team building activity away day or a peaceful relaxing treat for your staff, Sopwell House can cater for your every need.

SPACE TO BREATHE

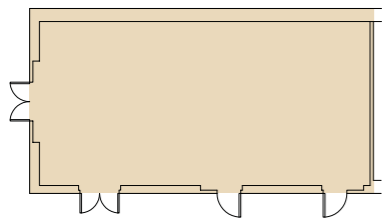


SPACE TO DISCUSS

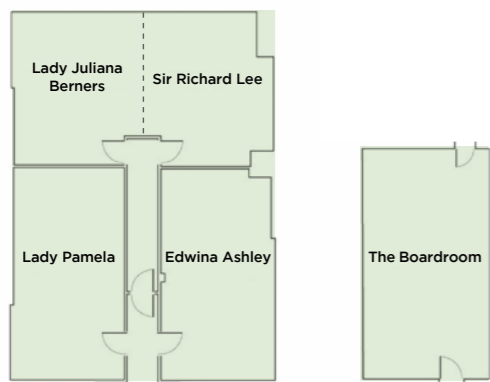
FLOOR PLANS



STABLES



FIRST FLOOR



An award winning event venue, Sopwell House has 15 function suites that can host events of all sizes from formal meetings in our boardroom to large conferences or product launches in our St Alban Suite.

Function suites situated on the ground floor open onto a terrace overlooking the hotel's stunning gardens - an ideal break-out area during the spring and summer months.

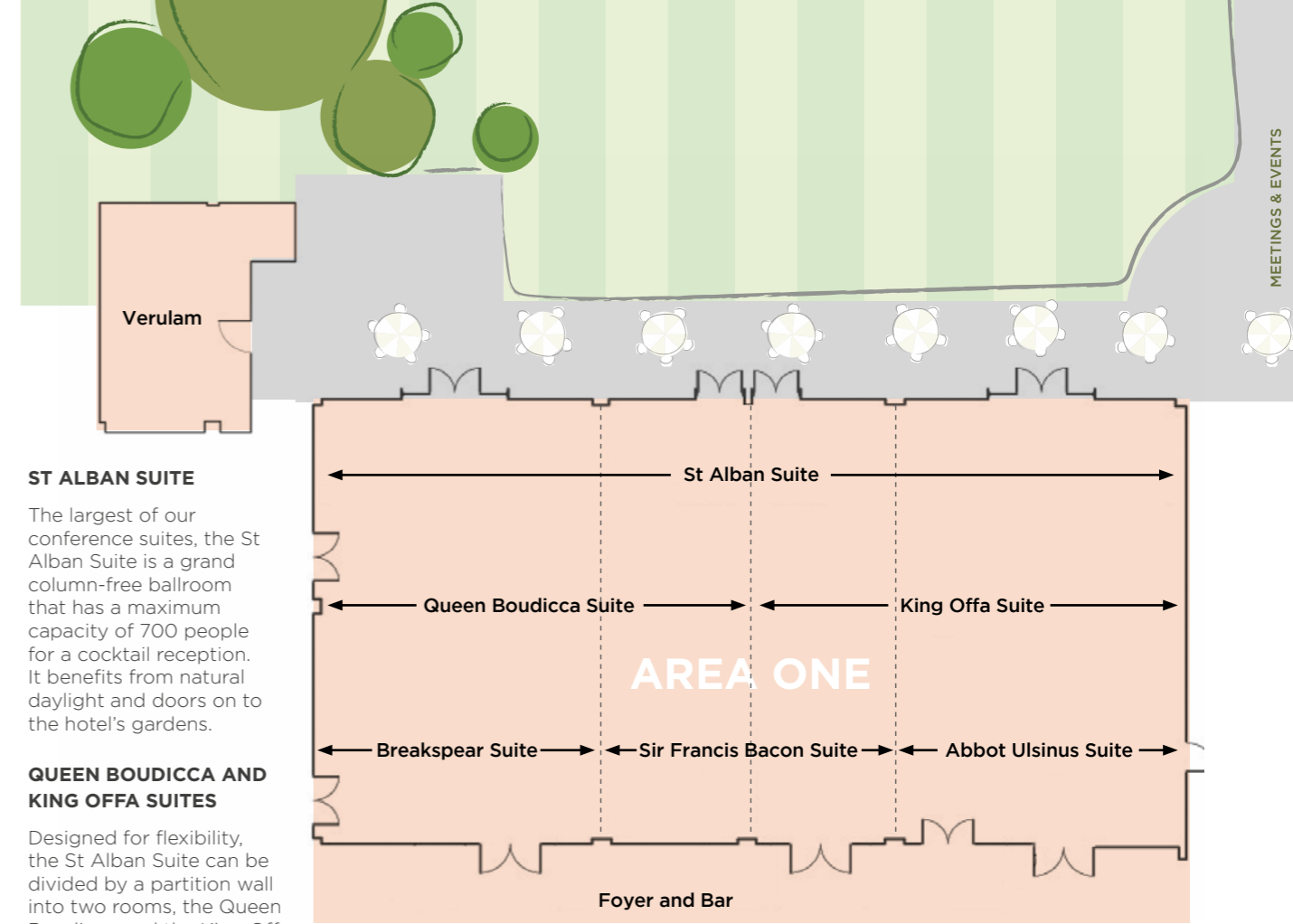
SPACE TO ESCAPE



SPACE TO CELEBRATE

ST ALBAN SUITE

SPACE TO PRESENT



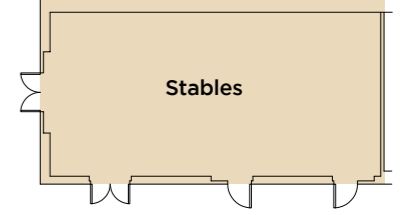
ST ALBAN SUITE
The largest of our conference suites, the St Alban Suite is a grand column-free ballroom that has a maximum capacity of 700 people for a cocktail reception. It benefits from natural daylight and doors on to the hotel's gardens.

QUEEN BOUDICCA AND KING OFFA SUITES
Designed for flexibility, the St Alban Suite can be divided by a partition wall into two rooms, the Queen Boudicca and the King Offa. Each can hold a maximum of 180 delegates for a theatre-style set-up.

BREAKSPEAR, SIR FRANCIS BACON AND ABBOT ULSINUS SUITES
For even smaller events, the St Alban can be divided into three further rooms, the Breakspear Suite, the Sir Francis Bacon and the Abbot Ulsinus Suite, each with a capacity of 100 delegates, theatre style.

VERULAM SUITE
Elegant and cosy, the Verulam is ideal as a break-out room, or for interviews and private dining. It can accommodate a maximum of 10 people for a sit-down dinner.

STABLES
A unique meeting room positioned within a separate building to the main hotel, formally the Stables.



Map key:
— Solid walls
- - - Partition walls

| ROOM SIZES & CAPACITIES (NO. OF DELEGATES) | | | | | | | | | | | | | | | |
|--|-------------|-------------|-------------|-------------|------------|------------|------------|---------|-----------|--------------|--------------|---------------|--------------|--------------------------------------|---------------------------|
| Room Name | Theatre F/P | Theatre B/P | Cabaret F/P | Cabaret B/P | C'Room F/P | C'Room B/P | Board-room | U-Shape | Reception | Lunch/Dinner | Dinner Dance | Length ft/m | Width ft/m | Area ft ² /m ² | Height ft/m |
| St. Alban Suite | 380 | 320 | 180 | 140 | 160 | 120 | 110 | 70 | 700 | 300 | 250 | 74'9" / 22.7 | 40'6" / 12.3 | 3027 / 271 | 11'8" - 14'1" / 3.6 - 4.3 |
| Queen Boudicca | 180 | 130 | 90 | 60 | 90 | 70 | 55 | 50 | 300 | 140 | 120 | 40'9" / 12.4 | 37'3" / 11.3 | 1571 / 140 | 11'8" - 14'1" / 3.6 - 4.3 |
| King Offa | 180 | 130 | 90 | 60 | 90 | 70 | 55 | 50 | 300 | 140 | 120 | 40'9" / 12.4 | 37'3" / 11.3 | 1571 / 140 | 11'8" - 14'1" / 3.6 - 4.3 |
| Breakspear | 100 | 60 | 60 | 40 | 60 | 40 | 40 | 40 | 160 | 80 | N/A | 40'9" / 12.4 | 24'6" / 7.4 | 998 / 91.8 | 14'1" / 4.3 |
| Francis Bacon | 100 | 60 | 60 | 40 | 60 | 40 | 40 | 40 | 160 | 80 | N/A | 40'9" / 12.4 | 24'6" / 7.4 | 998 / 91.8 | 11'8" - 14'1" / 3.6 - 4.3 |
| Abbot Ulsinus | 100 | 60 | 60 | 40 | 60 | 40 | 40 | 40 | 160 | 80 | N/A | 40'9" / 12.4 | 24'6" / 7.4 | 998 / 91.8 | 14'1" / 4.3 |
| Verulam | 20 | N/A | N/A | N/A | N/A | N/A | 7 | N/A | 20 | 10 | N/A | 20'0" / 6.1 | 12'6" / 3.8 | 250 / 23.18 | 11'8" / 3.6 |
| Stables | 50 | 30 | N/A | N/A | 20 | 20 | 20 | 25 | N/A | N/A | N/A | 36'6" / 11.15 | 18'1" / 5.55 | 660 / 61 | 7'6" / 2.31 |

FROM LORD MOUNTBATTEN TO PRINCE LOUIS



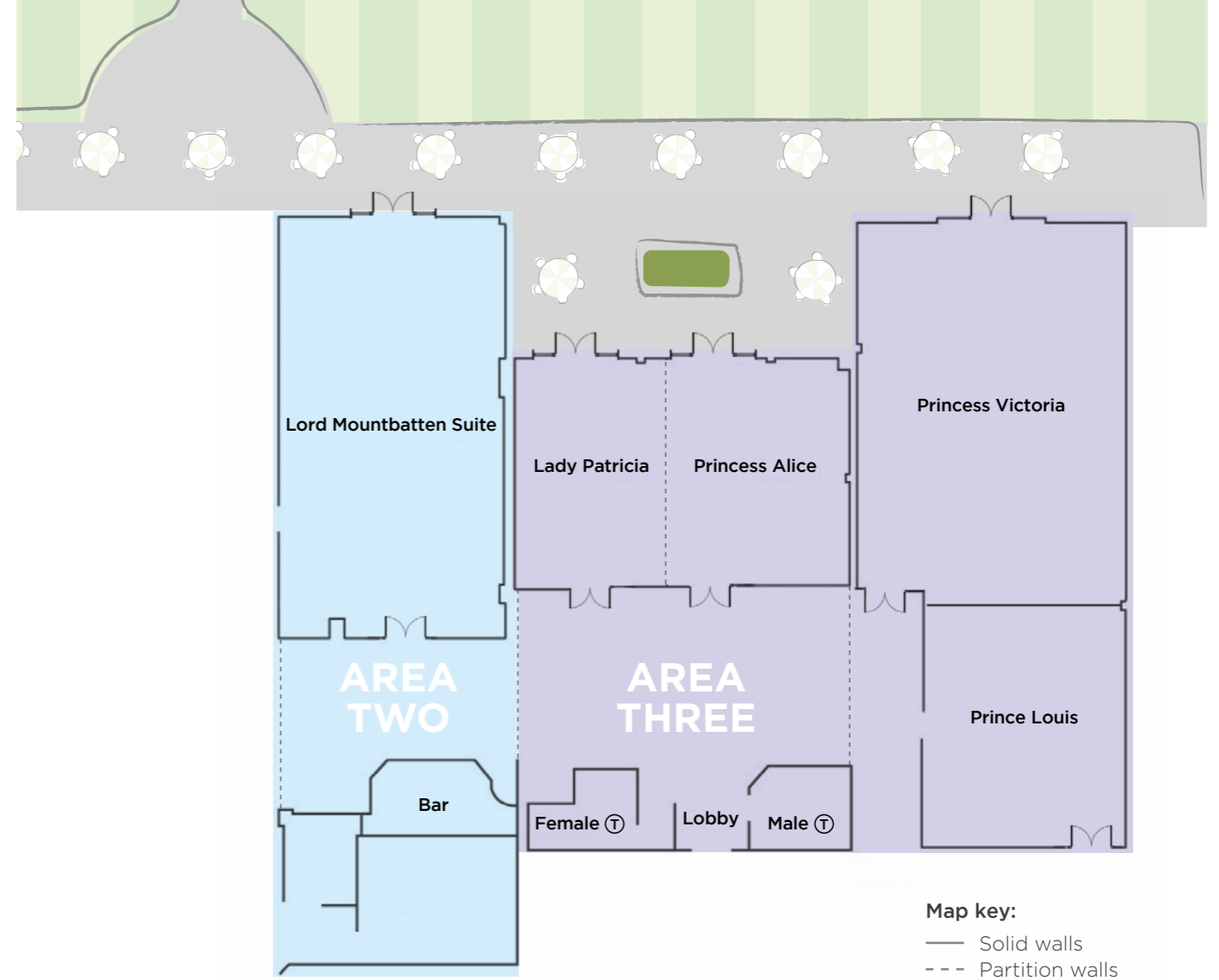
Lord Mountbatten Suite



Prince Louis Suite



Princess Victoria Suite



LORD MOUNTBATTEN

This suite is named after the original owner of Sopwell House and can hold up to 50 people cabaret style. Besides air-conditioning and high ceilings, this room benefits from its own private bar and access to our stunning gardens.

LADY PATRICIA AND PRINCESS ALICE

These rooms are adjacent to the main conference area and are suitable for small conferences and meetings. Both rooms benefit from natural lighting and views of the gardens. Combined, the rooms can accommodate a maximum of 50 delegates, theatre style.

PRINCESS VICTORIA AND PRINCE LOUIS

Princess Victoria can accommodate up to 110 people theatre-style. The adjacent Prince Louis is ideal for small informal meetings of up to 25, theatre style. Combined, both rooms can cater to a maximum of 140 delegates, theatre style.

| ROOM SIZES & CAPACITIES (NO. OF DELEGATES) | | | | | | | | | | | | | | | |
|--|-------------|-------------|-------------|-------------|------------|------------|------------|---------|-----------|--------------|--------------|--------------|--------------|--------------------------------------|-------------|
| Room Name | Theatre F/P | Theatre B/P | Cabaret F/P | Cabaret B/P | C'Room F/P | C'Room B/P | Board-room | U-Shape | Reception | Lunch/Dinner | Dinner Dance | Length ft/m | Width ft/m | Area ft ² /m ² | Height ft/m |
| Lord Mountbatten | 100 | 60 | 50 | 42 | 40 | 30 | 40 | 30 | 110 | 80 | 60 | 46'9" / 14.3 | 25'3" / 7.7 | 118' / 110.1 | 11'8" / 3.6 |
| Princess Victoria | 110 | 80 | 60 | 40 | 40 | 30 | 50 | 40 | 140 | 100 | N/A | 39'4" / 12.0 | 27'2" / 8.3 | 1071' / 99.6 | 8'2" / 2.5 |
| Prince Louis | 25 | 15 | N/A | N/A | 12 | N/A | 12 | 12 | 30 | 20 | N/A | 26'3" / 8.0 | 18'0" / 5.5 | 473' / 44 | 8'2" / 2.5 |
| Victoria/Louis combined | 140 | 110 | 80 | 60 | 50 | 50 | 50 | 40 | 160 | 120 | 80 | 65'6" / 20.0 | 27'2" / 8.3 | 1784' / 166 | 8'2" / 2.5 |
| Lady Patricia | 25 | N/A | N/A | N/A | N/A | N/A | 12 | N/A | 30 | 24 | N/A | 22'6" / 6.9 | 16'1" / 4.9 | 363' / 33.81 | 8'2" / 2.5 |
| Princess Alice | 25 | N/A | N/A | N/A | N/A | N/A | 12 | N/A | 30 | 24 | N/A | 22'6" / 6.9 | 18'0" / 5.5 | 405' / 37.95 | 8'2" / 2.5 |
| Patricia/Alice combined | 50 | N/A | 35 | 30 | 16 | N/A | 22 | 16 | 60 | 50 | N/A | 22'6" / 6.9 | 34'1" / 10.4 | 770' / 71.76 | 8'2" / 2.5 |

FIRST FLOOR

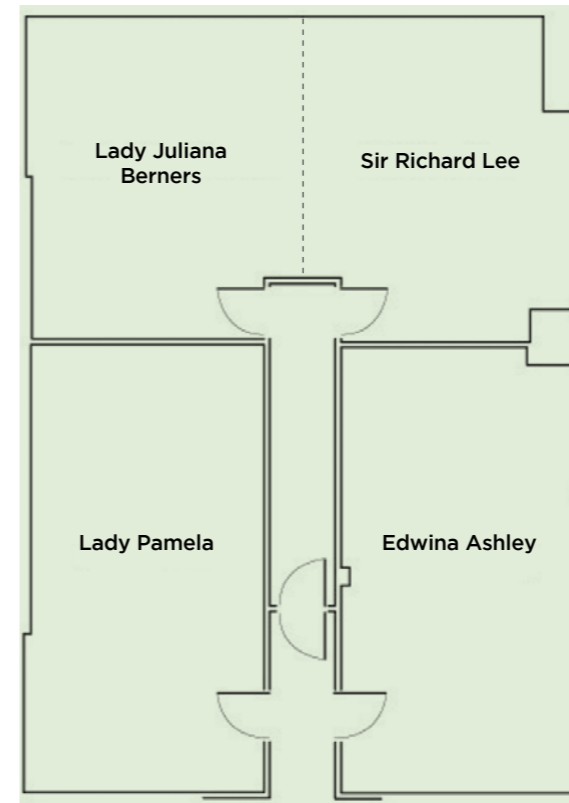
SPACE TO MEET



Lady Juliana Berners / Sir Richard Lee



The Boardroom



Map key:
 — Solid walls
 - - - Partition walls



LADY PAMELA, EDWINA ASHLEY, LADY JULIANA AND SIR RICHARD LEE

These rooms offer a more relaxing and informal environment, ideal for break-out rooms or small meetings. Lady Juliana and Sir Richard Lee combined provides a maximum seating capacity of 20 boardroom style.

THE BOARDROOM

The Boardroom can accommodate a maximum of 14 delegates. It offers natural daylight and dark-wood features, providing the perfect backdrop for executive meetings.

| ROOM SIZES & CAPACITIES (NO. OF DELEGATES) | | | | | | | | | | | | |
|--|-------------|-------------|-------------|------------|------------|-----------|--------------|--------------|--------------|--------------|--------------------------------------|--------------------------|
| Room Name | Theatre B/P | Cabaret F/P | Cabaret B/P | C'Room F/P | C'Room B/P | Boardroom | Lunch/Dinner | Dinner Dance | Length ft/m | Width ft/m | Area ft ² /m ² | Height ft/m |
| Lady Pamela | N/A | N/A | N/A | N/A | N/A | 14 | N/A | N/A | 25'8" / 7.85 | 13'9" / 4.2 | 353 / 33.0 | 8'0" / 2.44 |
| Edwina Ashley | N/A | N/A | N/A | N/A | N/A | 14 | N/A | N/A | 25'8" / 7.85 | 13'4" / 4.07 | 342 / 32.0 | 8'0" / 2.44 |
| Sir Richard Lee | N/A | N/A | N/A | N/A | N/A | 10 | N/A | N/A | 19'0" / 5.8 | 15'5" / 4.72 | 294 / 27.4 | 8'0" / 2.44 |
| Lady Juliana Berners | N/A | N/A | N/A | N/A | N/A | Lounge | N/A | N/A | 19'0" / 5.8 | 15'5" / 4.72 | 294 / 27.4 | 8'0" / 2.44 |
| Juliana/Lee combined | N/A | N/A | N/A | N/A | N/A | 20 | N/A | N/A | 19'0" / 5.8 | 15'5" / 4.72 | 294 / 27.4 | 8'0" / 2.44 |
| The Boardroom | N/A | N/A | N/A | N/A | N/A | 14 | 14 | N/A | 29'8" / 9.0 | 16'0" / 4.9 | 475 / 44.1 | 6'2" - 8'8" / 1.85 - 2.7 |

SPACE TO RELAX

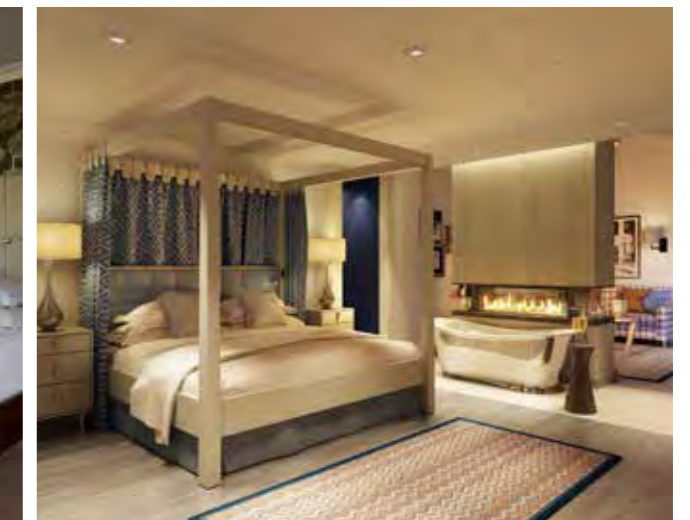
YOUR COUNTRY HOME FROM HOME

Sopwell House boasts 128 rooms and suites, each with their very own luxurious touches to make your stay as comfortable as possible. Set amongst 12 acres of Hertfordshire countryside the hotel also offers two restaurants, a conservatory bar, cocktail lounge, spa and gym.

Separate from the main hotel, access to the exclusive Mews Suites is through secure gates and set within beautifully landscaped gardens created by RHS Chelsea and Hampton Court Palace Flower Show Gold award winner Ann-Marie Powell.

The suites offer guests greater privacy and a choice of more individually designed rooms. Some suites include feature fireplaces, four-poster beds, romantic double ended in-room baths, private terraces, cedar wood hot tubs and high-end kitchenettes enabling a truly luxurious stay.

Mews guests can also relax and unwind in the exclusive communal garden area and soak away in the hydro-pool.



TEAM BUILDING

Working with a selection of highly skilled team building companies, Sopwell House can help you organise a fun and well planned corporate away day.

From our well-kept Walled Garden to our grand St Alban Suite and an array of activities to choose from, Sopwell House can accommodate away days of all sizes.



SPACE TO PLAY



ACTIVITIES INCLUDE:

- Lip Sync Challenge
- Missing Link
- Animation Innovation
- Kinetic Energy
- Beat Box
- Krypton Factor Indoors / Outdoors
- Country Sports
- Out of Office Olympics
- Crystal Mazed
- Wiped Out
- Spy Academy
- School Sports
- Segways
- Spinning
- Yoga
- Spa treatments
- Hovercraft
- Laser Shooting

RELAX & REJUVENATE

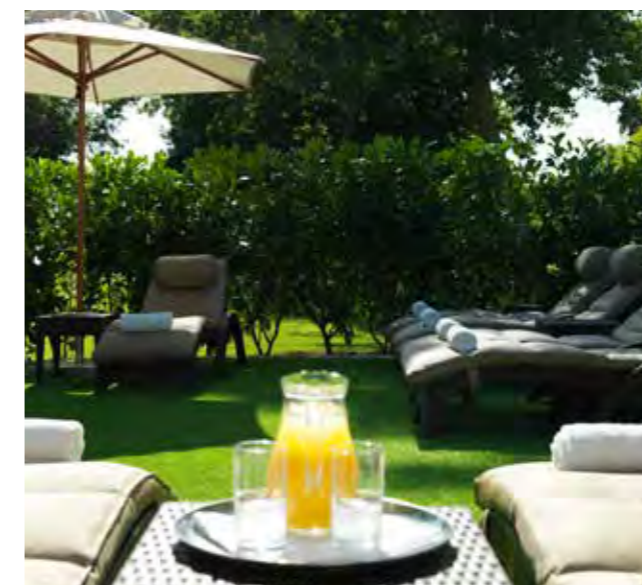
Sopwell House is the ideal place to rest your weary head after a day out with your team.

All of our rooms and suites have complimentary Wifi, a large flat screen TV with Sky HD box including the full Sky Sports package, air conditioning and complimentary access to the spa.

The Spa has a 14.5 metre swimming pool, spa bath, starlit steam room, glass fronted sauna and curved mosaic-lined experience showers with a luxurious heated mosaic seat. A range of spa treatments offer the ultimate in pampering, the best leading British spa brand products, combined with a professional, experienced spa team is guaranteed to help you unwind after a busy day.



SPACE TO UNWIND



SPACE TO DINE

FABULOUS HOMEMADE FOOD

Sopwell House can deliver a variety of menus to suit a range of corporate needs, from nutritious team breakfasts, champagne reception canapés, or a five course sit-down Gala Dinner for up to 250.

We can accommodate all special dietary requests with advance notice (minimum 48 hours) and all requests are treated with extra care.

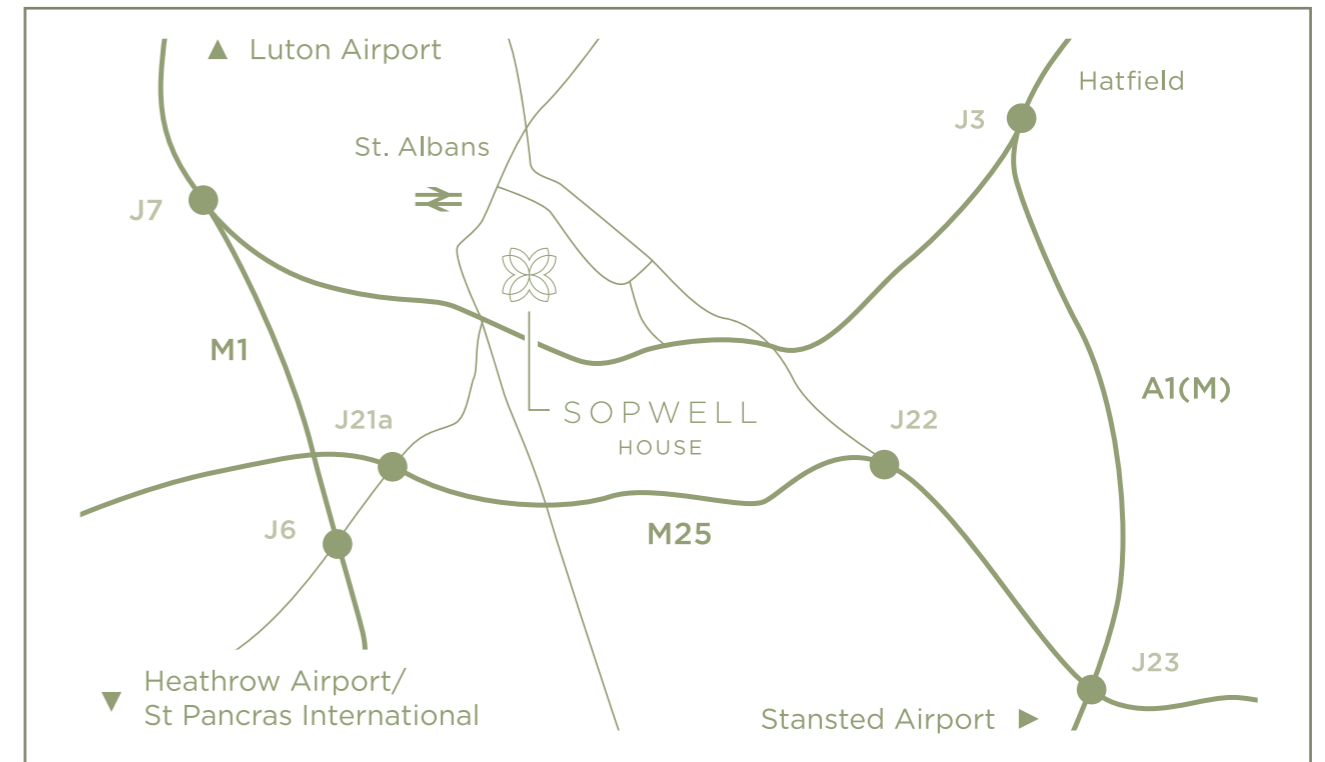


SPACE TO SAVOUR



LOCATION

Sopwell House
Cottonmill Lane, St Albans
Hertfordshire, AL1 2HQ



BY CAR

Located five minutes away from the A1 (M), M25 and just 15 minutes from the M1. Less than one hour's drive from central London.

BY TRAIN

Approximately 20 minutes to St Pancras International by train from St Albans City on the Thameslink railway.

SPACE TO ENJOY



SOPWELL
HOUSE

Sopwell House
Cottonmill Lane, St Albans
Hertfordshire AL1 2HQ
T 01727 750466 F 01727 220820
E events@sopwellhouse.co.uk
www.sopwellhouse.co.uk

